



اللوfer أبو ظبي  
LOUVRE ABU DHABI

*Residences*  
SAADIYAT GROVE









# EVERYTHING WE DO COMES FROM THE HEART

ALDAR IS ONE OF THE MOST TRUSTED AND RECOGNISED REAL-ESTATE LIFESTYLE DEVELOPERS IN THE UAE. OUR GOAL ISN'T SIMPLY TO BUILD PROPERTIES. WE STRIVE TO SHAPE COMMUNITIES THAT PEOPLE LOVE TO LIVE IN. COMMUNITIES THAT BECOME HOMES, BRIMMING WITH LIFE AND EVERYTHING WE LOVE. BECAUSE HOME ISN'T JUST A PLACE, IT'S A FEELING. AND THAT'S WHAT WE PROMISE TO DELIVER TO YOU EVERY DAY.

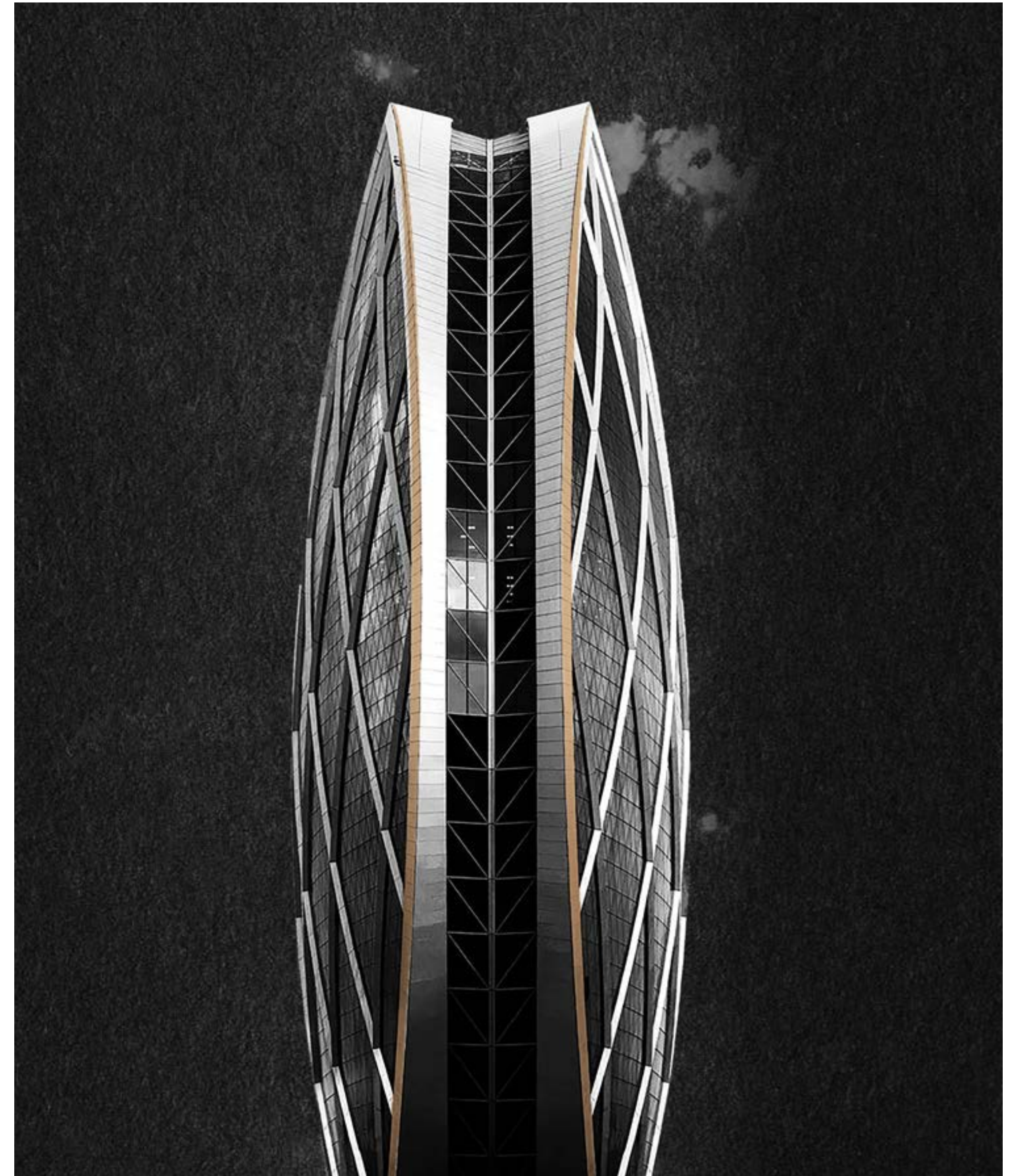
---

REVENUE  
**AED8.58 BN**  
FY 2021

INVESTMENT  
PORTFOLIO INCREASE  
**AED 1.0 BN**  
FY 2021

NET PROFIT  
**AED 2.33 BN**  
FY 2020

REVENUE SALES  
**AED 7.2 BN**  
FY 2021







# A ONE-OF-A-KIND PARTNERSHIP

FOR THE FIRST TIME EVER, LOUVRE ABU DHABI IS LENDING ITS NAME TO A RESIDENTIAL DEVELOPMENT, AS IT PARTNERS WITH ABU DHABI'S LARGEST DEVELOPER, ALDAR PROPERTIES. TOGETHER, THESE TWO ICONIC BRANDS ARE REDEFINING THE WAY IN WHICH LIFE AND ART CAN INTERTWINE.





# ABU DHABI, THE CITY WE CALL HOME

ABU DHABI IS A CITY WITH HEART. PEOPLE FROM ALL OVER THE WORLD HAVE BEEN DRAWN TO ITS NATURAL BEAUTY, VIBRANT CULTURAL SCENE, INSPIRING HERITAGE AND DYNAMIC BUSINESS LANDSCAPE. IT IS THE CAPITAL OF THE UAE AND A PLACE THAT PEOPLE LOVE TO CALL HOME.







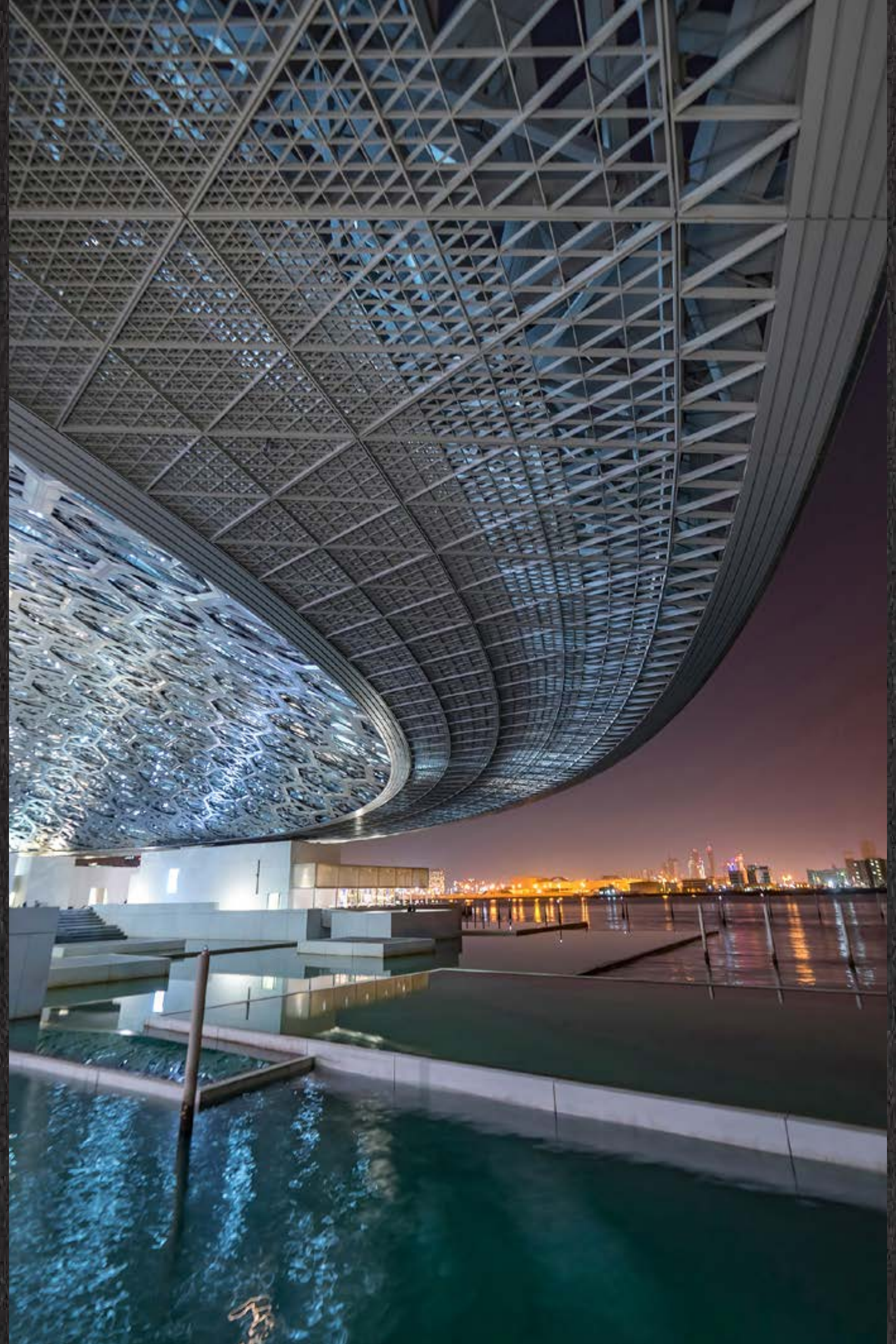
THE BOHEMIAN - PAINTING BY ÉDOUARD MANET

# INSPIRATION IS IN OUR NATURE AND EVERYWHERE ELSE

WHAT MORE COULD BE ASKED OF A TROPICAL ISLAND, THAN  
TURQUOISE WATERS, WHITE-SAND BEACHES, AND  
EFFORTLESS LUXURY ON EVERY CORNER? ON SAADIYAT, THE  
ANSWER IS UNPARALLELED INSPIRATION.

DESIGNATED AS ABU DHABI'S CULTURAL DISTRICT, SAADIYAT  
ISLAND IS HOME TO ZAYED NATIONAL MUSEUM, GUGGENHEIM  
ABU DHABI AND THE SPECTACULAR LOUVRE ABU DHABI.

AT THE CENTRE OF IT ALL, LIES A DESTINATION THAT IS  
REDEFINING THE UAE'S ROLE IN GLOBAL CULTURE.





WHERE EVERY SQUARE INCH  
ADDS QUALITY TO LIFE







Corniche Rd, Abu Dhabi  
20 Min



اللوفر أبوظبي

LOUVRE ABU DHABI

Residences

SAADIYAT GROVE

SAADIYAT BEACH CLUB

SAADIYAT BEACH GOLF CLUB

GUGGENHEIM  
ABU DHABI

SAADIYAT GROVE

MAMSHA AL SAADIYAT

JAWAHER SAADIYAT

LOUVRE ABU DHABI

ZAYED NATIONAL  
MUSEUM

MANARAT AL SAADIYAT

CULTURAL  
DISTRICT

SAADIYAT ISLAND

MARINA  
DISTRICT

NYU ABU DHABI

ABU DHABI



Yas Island  
15 Min

Abu Dhabi Airport  
20 Min

Dubai  
70 Min

15 Min

THE BRIDGES

REEM CENTRAL PARK

MEERA

THE GATE &  
ARC TOWERS

AL MARYAH  
ISLAND

15 Min

REEM ISLAND

SARAYA

BURJ  
MOHAMMED  
BIN RASHID

WORLD  
TRADE CENTER

KHALIDIYA  
VILLAGE

BANIYAS  
TOWERS



# A GROVE LIKE NO OTHER

AN EVER-EVOLVING, EVER-INVIGORATING DESTINATION AT THE HEART OF THE ISLAND, SAADIYAT GROVE MAKES ART AND CULTURE A PART OF LIFE. INTERACTIVE ARTWORKS AND DIGITAL MURALS SURROUND YOU, WHILE EXQUISITE STYLE IS REFLECTED THROUGH EVERY WINDOW. AND THE FOOD IS AN EXPERIENCE IN AND OF ITSELF.

SAADIYAT  
**GROVE**  
ABU DHABI





**1**  
**ZAYED NATIONAL**  
**MUSEUM**

THE UNITED ARAB EMIRATES' PREMIER MUSEUM, SHARING THE COUNTRY'S HISTORY AND THE STORY OF OUR LATE FOUNDING FATHER, SHEIKH ZAYED BIN SULTAN AL NAHYAN

**2**  
**ABRAHAMIC**  
**FAMILY HOUSE**

A BEACON OF MUTUAL UNDERSTANDING, HARMONIOUS COEXISTENCE AND PEACE AMONG PEOPLE OF FAITH AND GOODWILL

**3**  
**LOUVRE**  
**ABU DHABI**

THE ICONIC NAME, REPRESENTING THE HISTORY OF OUR WORLD AND ALL ITS PEOPLE, AS TOLD THROUGH ART

**4**  
**MAMSHA**  
**AL SAADIYAT**

AN EXCLUSIVE BEACHFRONT COMMUNITY FEATURING A PRISTINE 1.4KM WHITE SANDY BEACH AND BREATHTAKING SEA VIEWS

**5**  
**GUGGENHEIM**  
**ABU DHABI**

THE WORLD'S LARGEST GUGGENHEIM MUSEUM, FOCUSING ON MODERN AND CONTEMPORARY ART, FROM NORTH AFRICA TO SOUTH ASIA



WHERE EVENINGS COME  
ALIVE WITH EXPERIENCES





BE EFFORTLESSLY TRANSPORTED  
AND PROFOUNDLY MOVED





A PLACE FOR LAUGHTER  
AND EVERY FLAVOUR





WHERE EVERY VIEW  
LEADS TO WONDER





TAKE A SUNSET STROLL  
ALONG STREETS LINED  
WITH ART





A HOME DESIGNED  
TO ENERGISE LIFE







# HEAD OF A PTOLEMAIC QUEEN: CLEOPATRA VII

**CA. 305 BCE-30 BCE**

THIS MONUMENTAL PORTRAIT OF A QUEEN,  
CARVED IN THE GUISE OF THE GODDESS ISIS,  
IS A MOST REMARKABLE ILLUSTRATION OF IT.



# A RETAIL EXPERIENCE REIMAGINED

AESTHETIC BEAUTY FLOWS THROUGH THE STREETS, OFFERING HAUTE COUTURE ON EVERY CORNER, AS WELL AS THE LATEST TRENDS IN TECHNOLOGY AND LIFESTYLE. THIS IS WHERE ARTISTRY IS WOVEN INTO EVERY ITEM AND EACH PURCHASE IS DESIGNED TO INSPIRE.

INTERNATIONAL FASHION BRANDS

---

F&B OUTLETS

---

PERSONAL SHOPPER SERVICE

---

GROCERY SHOPPING SERVICE

---

SHOPPING BAG DROP-OFF





ELEGANT AND LUXURY FASHION  
AT YOUR DOORSTEP





A LIFESTYLE INSPIRED BY  
ART AND CULTURE





FOR EFFORTLESS  
MORNINGS & ELEGANT  
AFTERNOONS

amber Café





EVERY  
DAY  
INSPIRED







GELB-ROT-BLAU - PAINTING BY WASSILY KANDINSKY

# A VIEW DESIGNED FOR A GALLERY

FEW PLACES ON EARTH OFFER STUNNING NATURAL BEAUTY, AS WELL AS UNRIVALLED HERITAGE AND ARTISTRY, THE MOMENT YOU LOOK OUT THE WINDOW. BUT THIS IS THE EVERYDAY REALITY OF LOUVRE ABU DHABI RESIDENCES. A DEVELOPMENT THAT WEAVES THE STYLE AND PRESTIGE OF THE WORLD-FAMOUS MUSEUM INTO ITS VERY CORE.







EVERY DETAIL HAS BEEN METICULOUSLY CRAFTED TO CAPTURE  
THE ESSENCE OF ARTISTRY — FROM EXPANSIVE TERRACES AND  
BALCONIES TO FINISHES OF THE HIGHEST QUALITY.





THE LOBBY OPENS UP TO DOUBLE-HEIGHT CEILINGS AND WORLD-FAMOUS ART, WITH PIECES INSPIRED BY THE COLLECTION OF LOUVRE ABU DHABI. GLASS ELEVATORS CARRY YOU TO THE RESIDENTIAL HEIGHTS, WHILE YOU ENJOY PANORAMIC VIEWS OF THE SURROUNDING SPLENDOUR.



A GRAND ENTRANCE  
WITH EVERY ARRIVAL





WHERE WORLD-CLASS  
ART WELCOMES YOU HOME





WHERE BEAUTY IS ALWAYS  
THE BACKDROP





THE PERFECT START  
TO EVERYDAY







EFFORTLESS VERSATILITY  
FOR EVERY SPECIAL  
MOMENT AT HOME





# SPHINX, MYTHOLOGICAL CREATURE

A DAZZLING EXAMPLE OF THE ARCHAIC SCULPTURE THAT BLOSSOMED IN THE GREEK WORLD OF THE 7TH-6TH CENTURY BCE, THIS SPHINX ALREADY ENCAPSULATES THE AESTHETIC REVOLUTION OF THE NEXT CENTURY IN EMBRYONIC FORM.





A GIRL BLOWING ON A BRAZIER -  
PAINTING BY GEORGES DE LA TOUR

# LIFE ENRICHED IN EVERY MOMENT

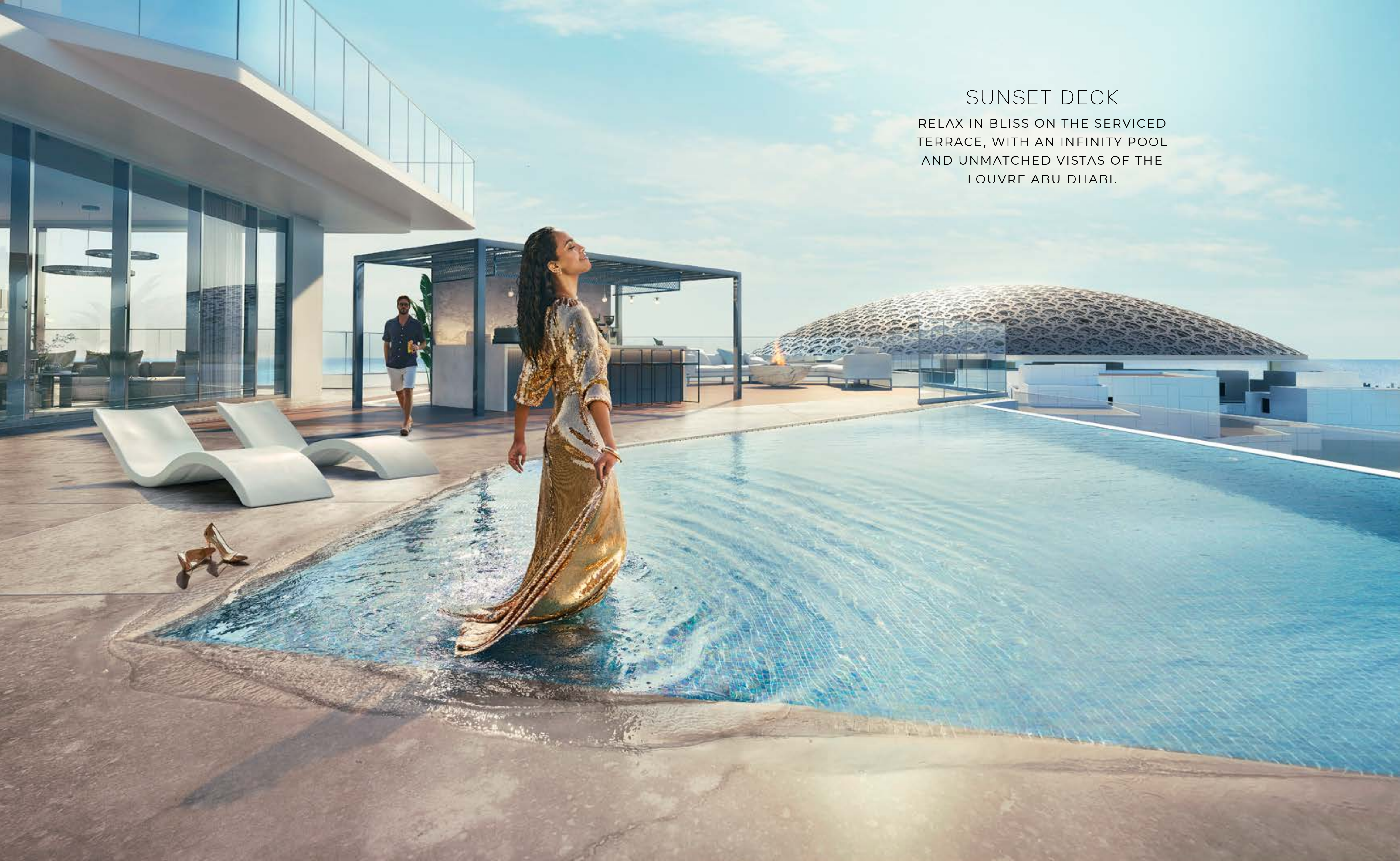
BE IMMERSSED IN A WORLD OF WONDER AND PICTURESQUE  
MOMENTS. FROM PANAROMIC VIEWS ON THE SUNSET DECK TO THE  
QUINTESSENTIAL RETREAT AT LE SALON DÉTENTE.





## SUNSET DECK

RELAX IN BLISS ON THE SERVICED  
TERRACE, WITH AN INFINITY POOL  
AND UNMATCHED VISTAS OF THE  
LOUVRE ABU DHABI.







## CINEMA PRIVÉ

HAVE A WORLD OF ENTERTAINMENT  
ALL TO YOURSELF IN OUR 5-STAR  
RESIDENTIAL THEATRE





LE SALON DÉTENTE  
HOST MEETINGS IN OUR BUSINESS  
LOUNGE WHERE WORK FLOWS BOTH  
SEAMLESSLY AND LUXURIOUSLY



CREATIVITÉ ROOM  
A PLACE FOR YOUNG MINDS TO WANDER  
AND GROW, WHILE OVERLOOKING A  
WONDER OF THE WORLD





## TERRACE DE JARDIN

RELAX ON THE GARDENED TERRACE,  
WHERE GREENERY AND SERENITY ARE  
INTERTWINED IN EVERY MOMENT





## SALLE DE JEUX

BE ENTERTAINED IN EVERY WAY,  
FROM EXPANSIVE SCREENS OF  
FAVOURITE SPORTS, TO CASUAL  
AFTERNOON GAMES





# HERACLES BATTLING THE NEMEAN LION

CA. 520 BCE

THE COMBAT BETWEEN HERACLES AND THE NEMEAN LION, THE FIRST OF HIS TWELVE LABOURS, IS SEEN IN BLACK FIGURES ON THIS KRATER. THE DEPICTION CAPTURES THE TENSION OF THE FIGHT BETWEEN THE GREEK HERO AND THE SUPPOSEDLY INVULNERABLE ANIMAL. AFTER HIS VICTORY, HERACLES SKINNED THE WILD BEAST AND INHERITED ITS STRENGTH AND FEROCITY ALONG WITH THE PELT. THIS RECURRING THEME IN GREEK ART IS INTERPRETED AS THE TRIUMPH OF CIVILISATION OVER THE WILDERNESS.





# WELLBEING BEGINS HERE

INDULGE MIND AND BODY IN OUR BIEN-ÊTRE CENTRE,  
WHERE REFRESHING SWIMMING POOL WATERS FLOW FROM  
THE ELEVATED TERRACE, OUT TOWARDS LOUVRE ABU DHABI  
AND THE MAJESTIC CITY SKYLINE.

INFINITY POOL

---

SAUNA

---

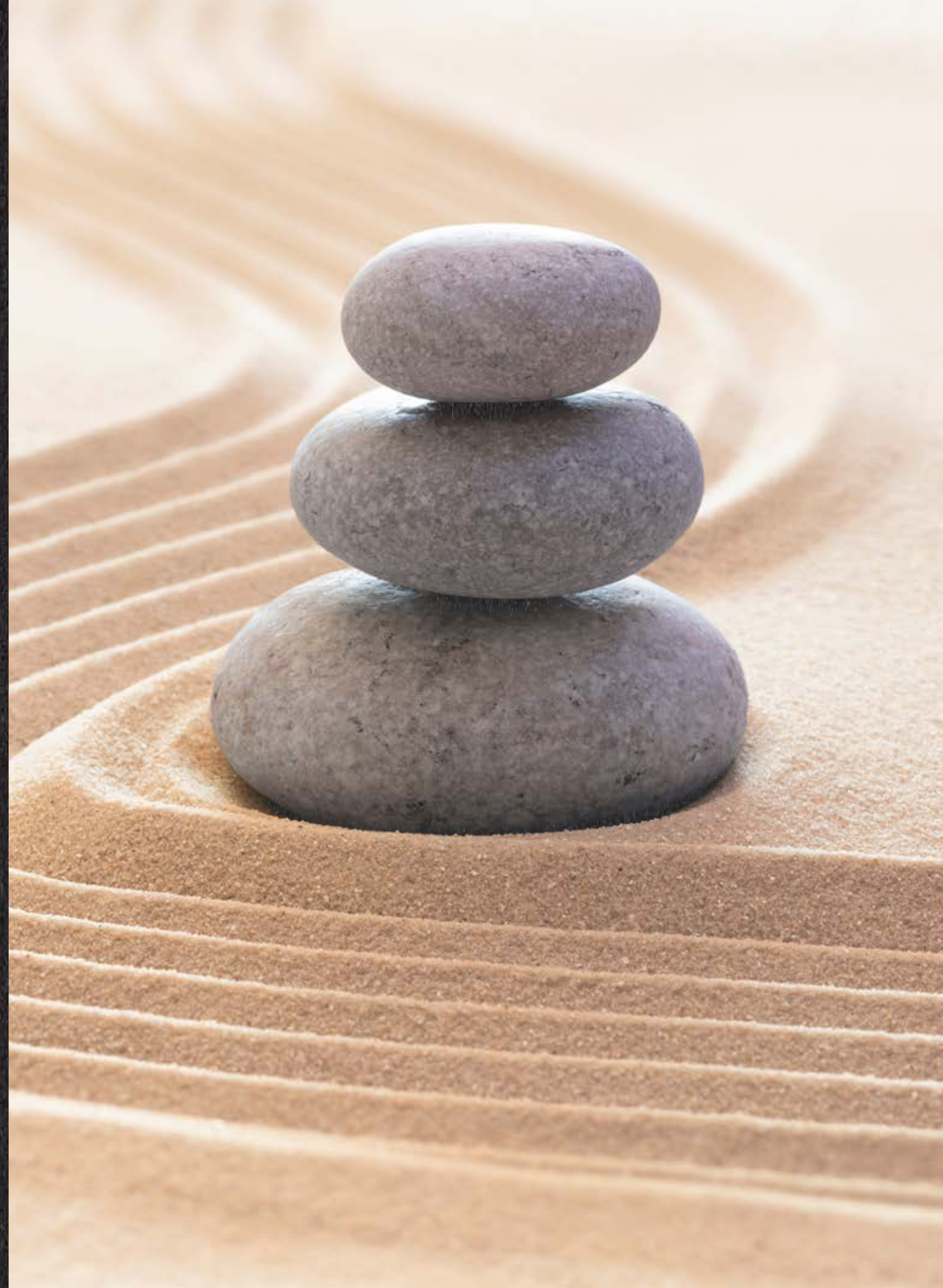
YOGA & PILATES STUDIO

---

FITNESS CENTER

---

STATE-OF-THE-ART GYM EQUIPMENT





TAKE IN THE BEAUTY ON  
SO MANY LEVELS





## LE GYM

ENHANCE YOUR ENERGY LEVEL WITH  
A FITNESS CENTER THAT STIMULATES  
THE BODY AND THE MIND





# EVERY DAY MADE EFFORTLESS

LET LIFE FLOW SEAMLESSLY FROM ONE MOMENT TO THE  
NEXT, FACILITATED BY A COMPREHENSIVE RANGE OF  
BESPOKE SERVICES, READY AT YOUR CONVENIENCE.

24/7 CONCIERGE

---

CHEF PRIVÉ

---

PERSONAL STYLIST

---

PET CONCIERGE

---

ART CONSEILLER







## CHEF PRIVÉ

DELIGHT YOUR GUESTS WITH  
HAUTE CUISINE IN THE COMFORT  
OF YOUR HOME





PERSONAL STYLIST  
HOST SHOPPING SPREES IN YOUR  
OWN WARDROBE



## PET CONCIERGE

PAMPER EVERY MEMBER OF THE  
FAMILY WITH OUR DOG WALKING &  
GROOMING SERVICE





# AMENITIES & SERVICES

## WELLNESS

WELLBEING CENTER, INCLUDING  
GYM, SAUNA, WITH DIRECT VIEWS  
OF LOUVRE ABU DHABI

MEDITATION LAWNS

YOGA AND PILATES STUDIOS

## RECREATION & ENTERTAINMENT

SUNSET DECK WITH  
UNINTERRUPTED VIEWS  
OF LOUVRE ABU DHABI &  
JUICE BAR POOL AREA

MUSEUM-VIEW LOUNGE WITH  
GAMES ROOM, COFFEE  
STATION, TABLE TENNIS,  
AND BILLIARDS

LE SALON DÉTENTE LOUNGE  
WITH SOCIALISING AREA, LIBRARY,  
SALON, PRIVATE MEETING ROOMS  
AND CO-WORKING SPACES

CREATIVITÉ ROOM  
INDOOR KIDS' PLAY AREA

CINEMA PRIVÉ, 5-STAR  
RESIDENTIAL THEATRE

## SERVICES

24/7 CONCIERGE SERVICE

VALET SERVICE, DOORMAN & BELL BOY

ART CONSEILLER

PERSONAL FITNESS TRAINING

CATERING & EVENT PLANNING

RESERVATION ASSISTANCE FOR  
RESTAURANTS, TRAVEL, AND CAR  
RENTAL

PRE-OCCUPATION PROVISIONS  
FOR GROCERIES, DELIVERIES AND  
REFRIGERATOR STOCKING

PACKAGE/COURIER DELIVERY

PET SPA & GROOMING

COMPLIMENTARY SHOPPING BAG DROP  
OFF TO APARTMENTS

HOUSEKEEPING

LAUNDRY & DRY-CLEANING

SMART-HOME PACKAGE

\* SOME OF THE ABOVE SERVICES ARE SUBJECT TO ADDITIONAL COSTS AND WILL BE RENDERED THROUGH AFFILIATE PARTNERS



# SUSTAINABILITY AT YOUR DOORSTEP

SUSTAINABILITY IS AT THE CORE OF EVERYTHING WE DO. EVERY PIECE OF ARCHITECTURE HAS BEEN DESIGNED AND CONSTRUCTED TO PEARL REQUIREMENTS – THE GREEN BUILDING RATING SYSTEM THAT'S PART OF ABU DHABI'S SUSTAINABLE DEVELOPMENT INITIATIVE, ESTIDAMA.

BUILT FROM ETHICALLY SOURCED, NATURAL MATERIALS, OUR HOMES MAKE A POSITIVE ENVIRONMENTAL IMPACT. WE'RE ALSO PROMOTING ECO-CONSCIOUS LIVING IN THE COMMUNITY, WITH GREEN SPACES, SHADED COMMUNAL AREAS AND COVERED WALKWAYS BETWEEN DISTRICTS THAT MAKE IT PLEASANT TO STAY OUTDOORS AND BE ACTIVE.





# EVERY INCH AN ARTWORK

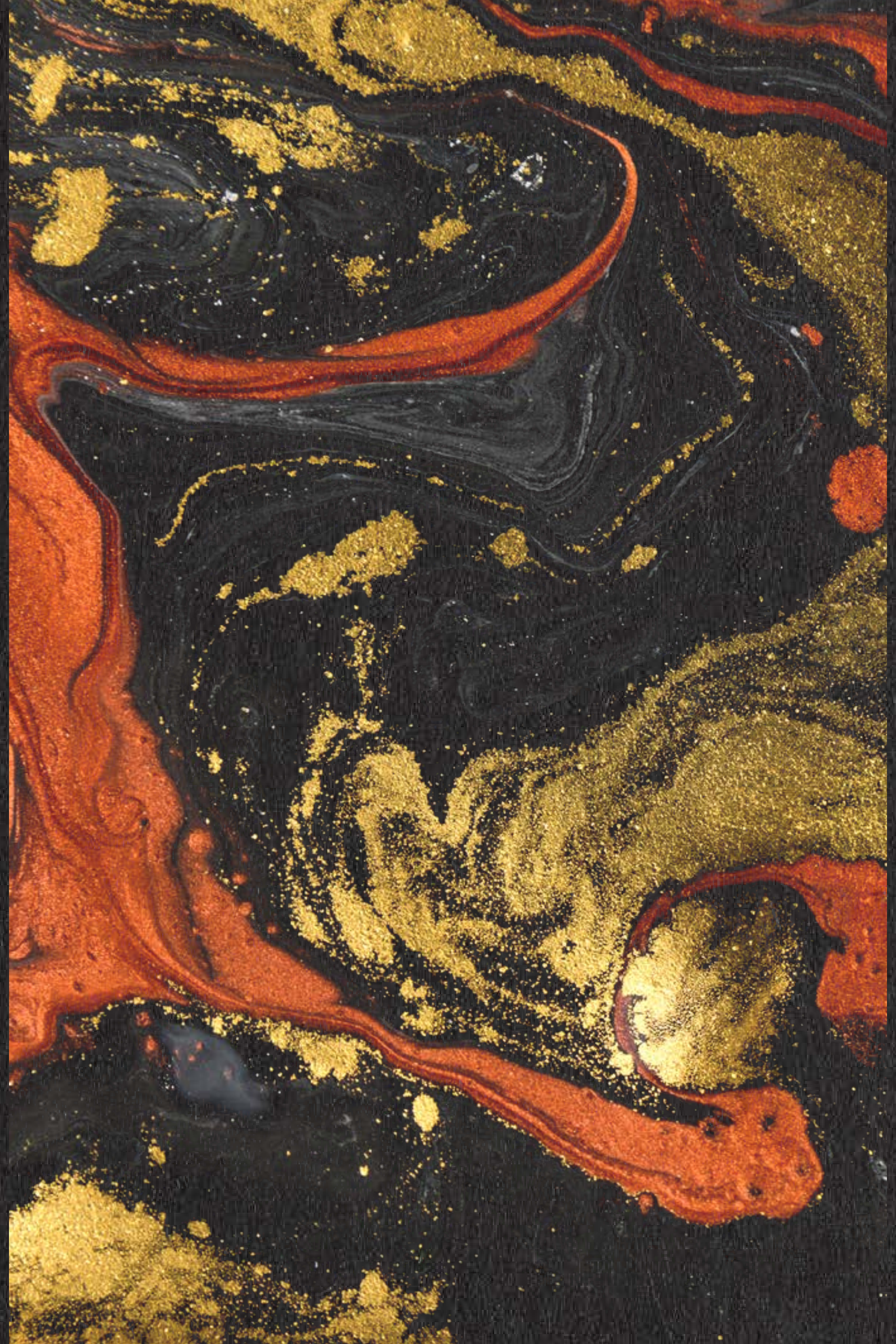
The Louvre Abu Dhabi Residences is the embodiment of class and worldly charm.

---

The living experience evokes a sense of sophistication, elevated by unique artworks punctuated throughout the residences. Floor-to-ceiling windows frame the uninterrupted views of the Louvre Abu Dhabi and the Arabian Gulf.

---

World-class home amenities are complemented with marble finishes and metallic accents that exude prestige, exclusivity and timeless style.





START THE DAY FRESH  
WITH EXCEPTIONAL FINISHES





A close-up image of a light-colored marble surface. The pattern features soft, flowing veins in shades of taupe, cream, and light beige against a pale, off-white background. The overall effect is one of elegance and subtle texture.

# LIGHT PREMIUM

TAUPE AND CREAMY UNDERTONES TO BRING  
WARMTH, ADDED RICHNESS AND VERSATILITY  
TO ANY SPACE.

A close-up image of a dark-colored marble surface. The pattern is dominated by deep charcoal and black tones, with intricate, swirling veins of slate grey and white. The texture is more dramatic and high-contrast than the light premium version.

# DARK PREMIUM

A COHESIVE PALETTE OF COOL NEUTRALS LIKE  
CHARCOAL WITH SLATE GREY UNDERTONES FOR  
A BOLD STATEMENT.






A WELL-BEING  
SANCTUARY FOR YOUR  
SELF-CARE NEEDS





A modern, open-plan living and dining area. The kitchen features dark wood cabinetry and a white marble countertop with a black and white marble backsplash. A long, rectangular dining table with a white marble top and dark metal legs is set with white linens, glassware, and a centerpiece of pink and white flowers. Several grey upholstered chairs with dark metal frames are arranged around the table. In the foreground, there are three blue upholstered armchairs. To the right, a light grey sofa with a brown cushion is visible. A small round side table with a gold-colored base holds a glass of water. A large, textured rug in shades of beige and brown covers the floor. The ceiling has recessed lighting and a modern pendant light hangs over the living area.

OPEN KITCHEN AND LIVING  
SPACES TO SEAMLESSLY  
ENJOY EACH MOMENT

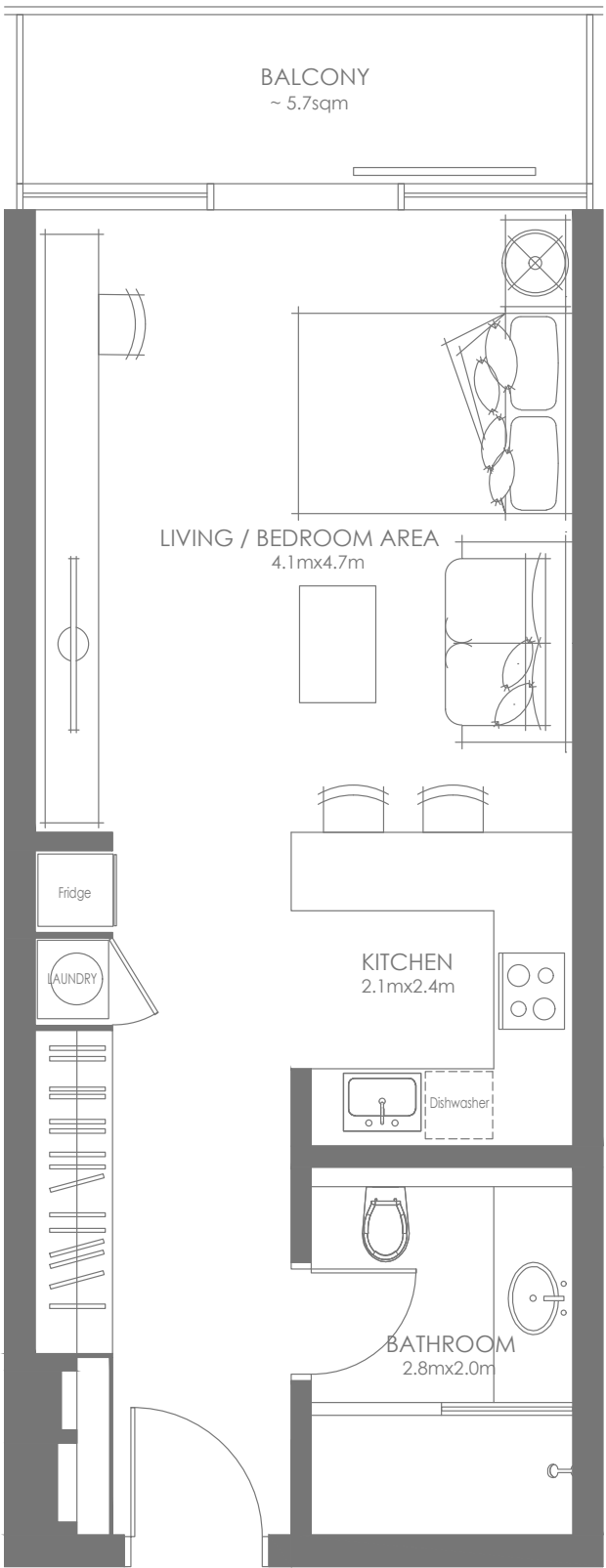


STUDIO — TYPE A



Disclaimer: This plan is reproduced for illustrative purposes as an example of a typical plot layout and Aldar makes no representation of warranty in relation to any of the information shown.

STUDIO — TYPE B

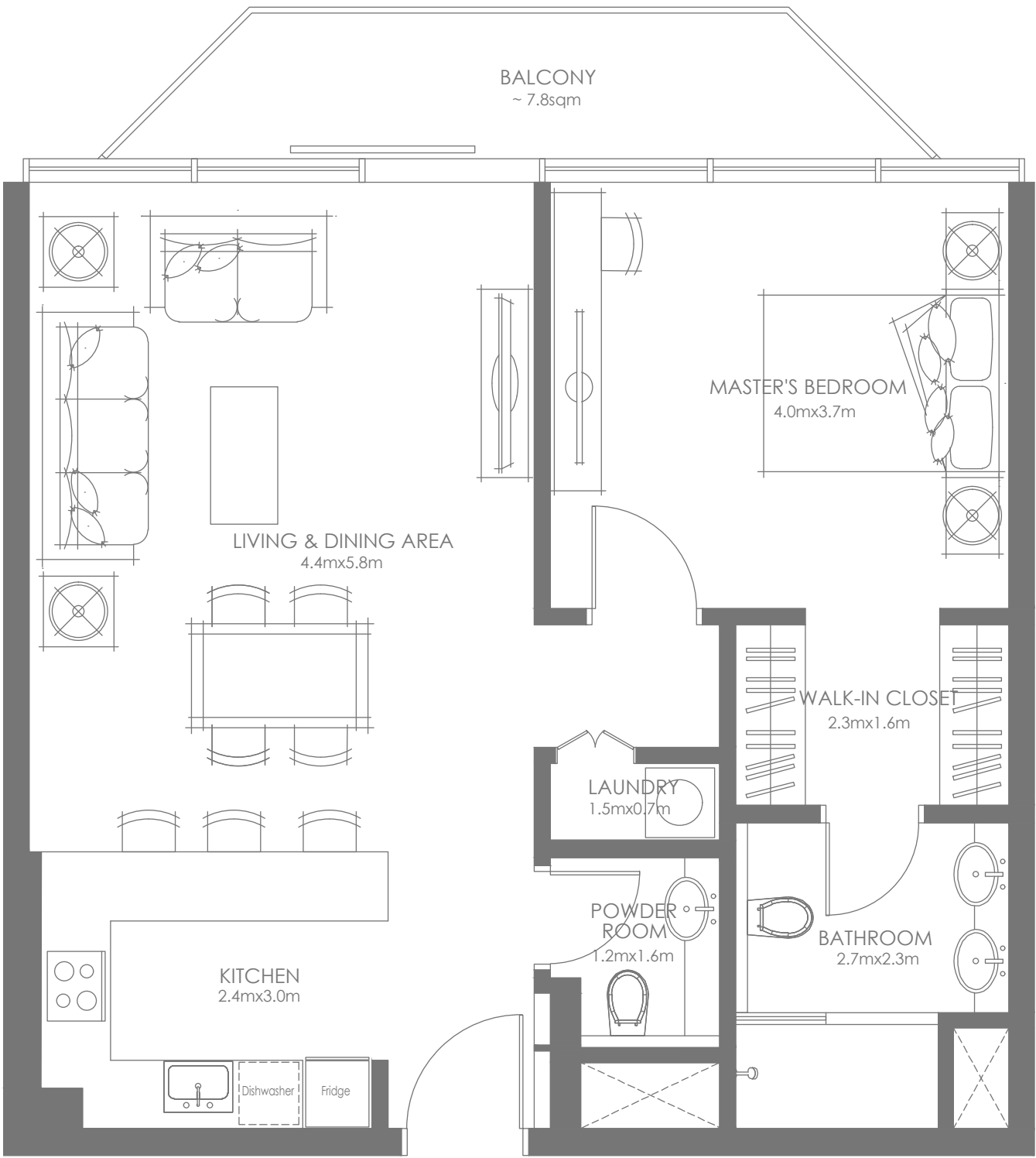


Disclaimer: This plan is reproduced for illustrative purposes as an example of a typical plot layout and Aldar makes no representation of warranty in relation to any of the information shown.





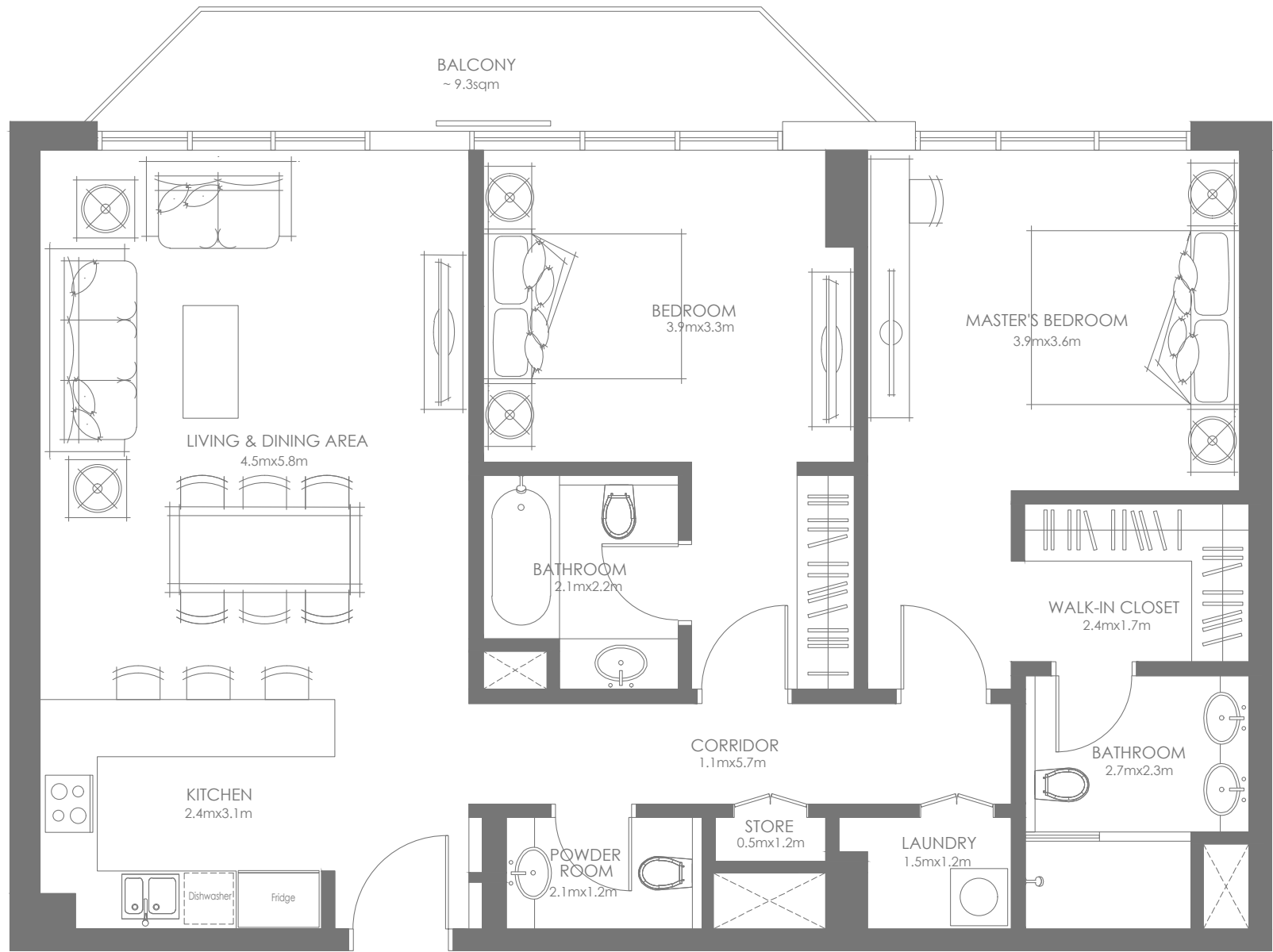
# 1-BEDROOM – TYPE A



Disclaimer: This plan is reproduced for illustrative purposes as an example of a typical plot layout and Aldar makes no representation of warranty in relation to any of the information shown.

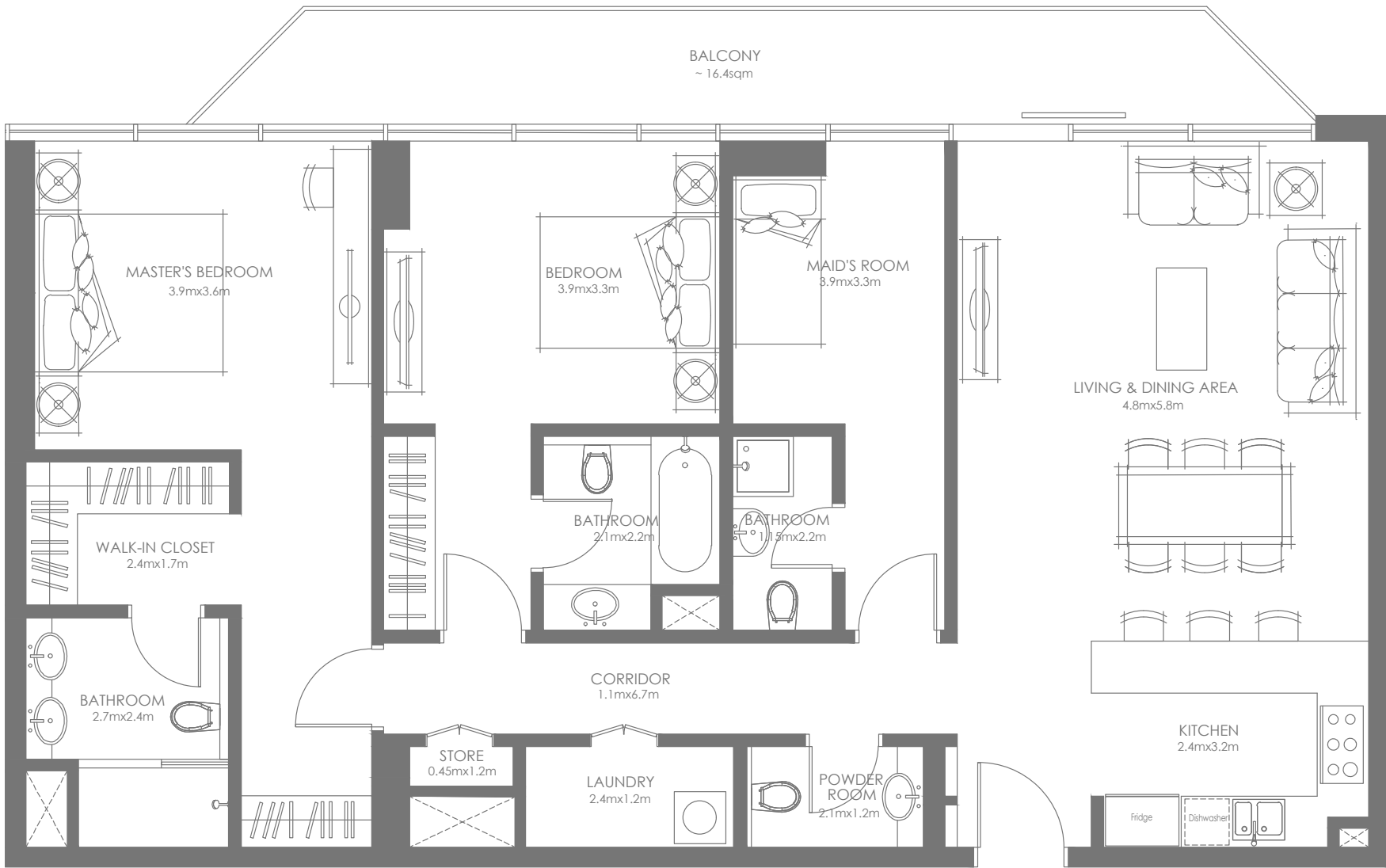


# 2-BEDROOMS TYPE A



Disclaimer: This plan is reproduced for illustrative purposes as an example of a typical plot layout and Aldar makes no representation of warranty in relation to any of the information shown.

# 2-BEDROOMS + MAID'S ROOM TYPE B



Disclaimer: This plan is reproduced for illustrative purposes as an example of a typical plot layout and Aldar makes no representation of warranty in relation to any of the information shown.

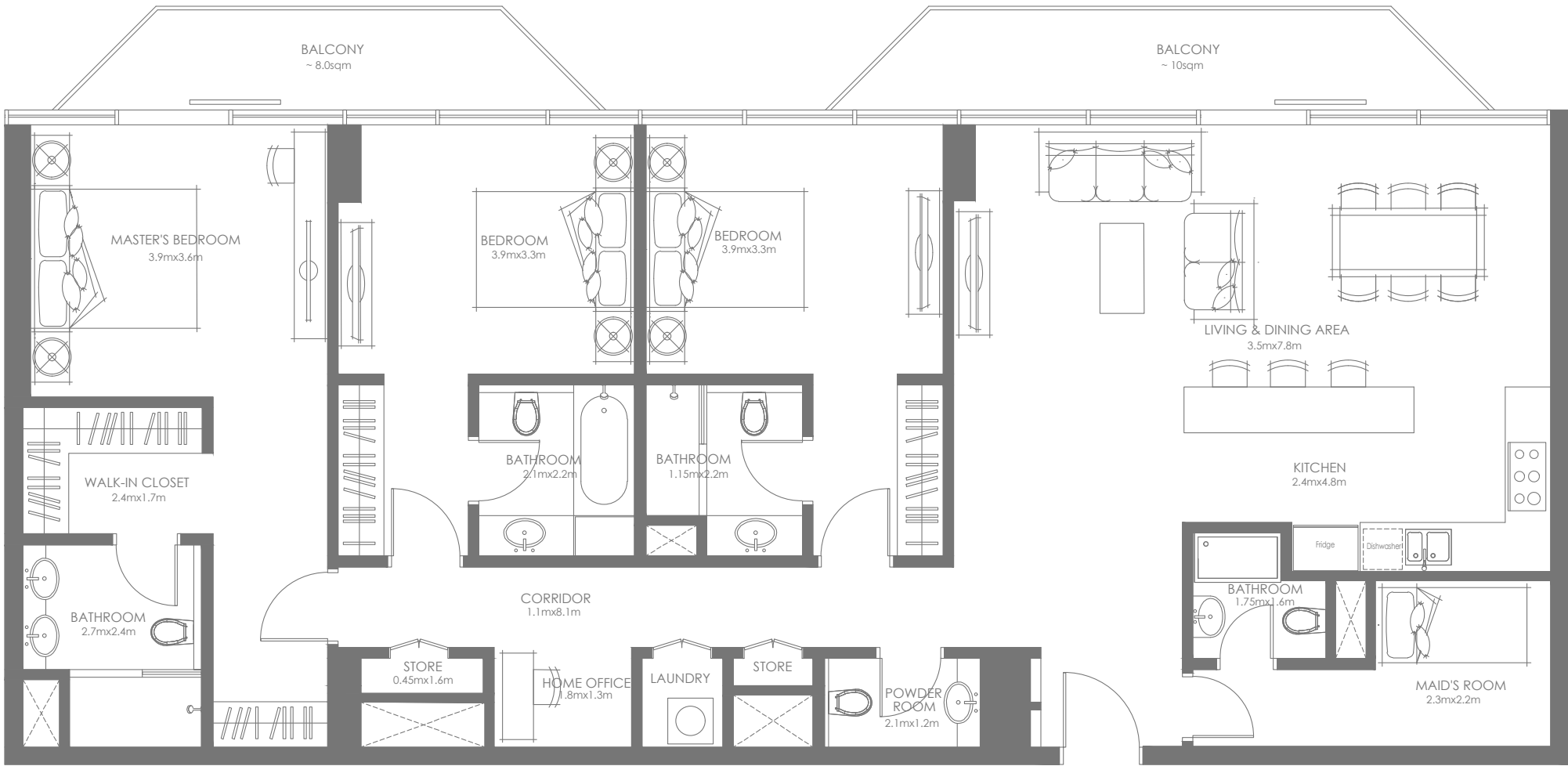




SCULPTED ELEGANCE ON  
EVERY SURFACE



# 3-BEDROOMS + MAID'S ROOM TYPE A



Disclaimer: This plan is reproduced for illustrative purposes as an example of a typical plot layout and Aldar makes no representation of warranty in relation to any of the information shown.





# A HOME FOR LIFE

WITH A UAE GOLDEN VISA

INVESTING IN A PROPERTY AT LOUVRE ABU DHABI RESIDENCES  
GRANTS ELIGIBILITY TO APPLY FOR A UAE GOLDEN VISA, SO YOU  
CAN CALL THE COUNTRY HOME FOR THE LONG TERM.







# MUSEUM PRIVILEGES

ENJOY A WORLD OF PRIVILEGES  
WITH THE 'GROVE CIRCLE'  
MEMBERSHIP, GRANTING  
COMPLIMENTARY ACCESS TO  
LOUVRE ABU DHABI

---

RESIDENTS WILL ALSO RECEIVE  
F&B DISCOUNTS AND ACCESS TO  
SELECT EXHIBITS, ART REVEALS,  
AND ART CLASSES, AS WELL AS  
AN EXCLUSIVE INVITATION TO AN  
ANNUAL RESIDENT EVENT,  
HOSTED AT LOUVRE ABU DHABI



# AN EXHIBITION OF LIFE

THERE'S INSPIRATION IN EVERY INCH OF LOUVRE ABU DHABI RESIDENCES—AND OUTSIDE OF IT TOO. EXPLORE THE RICH CULTURAL LANDSCAPE AND THE STUNNING NATURAL BEAUTY OF THE SURROUNDING TROPICAL WATERS.

## **SAADIYAT GROVE – CULTURAL DISTRICT, SAADIYAT ISLAND**

A BRAND-NEW SHOPPING, DINING AND ENTERTAINMENT HUB WHERE EVERY EXPERIENCE IS DESIGNED TO INSPIRE.

## **LOUVRE ABU DHABI – CULTURAL DISTRICT, SAADIYAT ISLAND**

THIS ARCHITECTURAL MARVEL IS UNMISSABLE FROM ALMOST EVERY VIEWPOINT OF YOUR RESIDENCE. AND ITS PLETHORA OF STORIES OF HUMANITY THROUGH ART, ARE WAITING JUST MINUTES FROM YOUR FRONT DOOR.

## **MANARAT AL SAADIYAT – CULTURAL DISTRICT, SAADIYAT ISLAND**

INSPIRE YOURSELF WITH A DAZZLING COLLECTION OF EXHIBITIONS AND WORKSHOPS.

## **SOUL BEACH – MAMSHA AL SAADIYAT, SAADIYAT ISLAND**

A NEW PRIVATE BEACH FACILITY ON ABU DHABI'S STUNNING SAADIYAT ISLAND. SOUL BEACH IS A 1KM STRETCH OF PRIME SAADIYAT COASTLINE, TRAVEL BROCHURE VIEWS, AND MESMERISING BLUES.

## **INTERNATIONAL UNIVERSITIES**

NEW YORK UNIVERSITY ABU DHABI AND CRANLEIGH ABU DHABI







#### CONTACT US

+971 4 248 3400 | +971 55 162 3236

Email Us

info@tanamiproperties.ae

For More Info...

[www.tanamiproperties.com/Projects/Louvre-Residences-in-Saadiyat-Grove](http://www.tanamiproperties.com/Projects/Louvre-Residences-in-Saadiyat-Grove)



#### ADDRESS

Office 3405, Marina Plaza,  
Al Marsa Street, Dubai Marina, UAE



